

BODHI 69-Silk collection



NB: The portrayed colours may differ from reality.



69-2370 KHAKI



69-2371 PURE WHITE



69-2372 SILVER



69-2373 HONEYCOMB



69-2374 OYSTER



69-2375 METAL

Specification

| | | |
|-------------------|--|-----------------|
| Name | Bodhi | |
| Width approx. | 110 cm - 43" | |
| Weight approx. | gr / lm | : 220 |
| | oz / lnyd | : 7.0 |
| Thickness | approx. 0.40 mm | |
| Composition | silk | : 100% |
| Weaving technique | plain woven | |
| Dyeing | yarn dyed | |
| Backing | reinforced woodpulp | : 70% |
| | recycled polyester | : 30% |
| Repeat approx. | height | : 1000cm - 394" |
| | width | : - |
| Hanging | random, pattern cannot be matched, non-reverse | |

Scan QR-code for more details, visuals and video content.



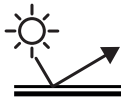
| | |
|-----------------------|---|
| Performance | Please contact info@tapetex.com for more detailed test reports. |
| Surface finish | A stain repellent finish prevents waterbased splashes penetrating and staining the material. Periodic vacuuming is recommended to prevent dust from building up on the materials surface. |
| Lightfastness | Test result as per ISO 105-B02:2014, Heraeus original Hanau Xenotest. |
| LRV values | Testing as per BS 8493:2008+A1:2010, Datacolor DC500. |
| Fire rating | ASTM E84 Class 1 or A and EUROCLASS (B s1 d0). |
| Permeability rating | Test result 46.7 as per ASTM E96-12, Method B, Water Vapor Transmission. |
| Indoor air quality | ASTM D6196, D5197 and D5116, Environmental Chamber Test. The testing followed UL 2821 "Greenguard Certification Program Method for Measuring and Evaluating Chemical Emissions". |
| REACH SVHC DoP No. | Compliant as per Centexbel testing. (CPR 305/2011), DOP-CPR-01 |



Treated with a stain repellent finish



Lightfastness: as per ISO 105-B02:2014 Xenotest



Light reflection: as per BS 8493:2008+A1:2010 Datacolor DC500



Fire resistant: EU: B, s1-d0 US: ASTM E84 Class 1 or A



Permeability rating: 46.7, as per ASTM E96-12 Method B



Indoor air quality: ASTM D6196, D5197 and D5116



Sustainability

Silk is a 100% renewable natural resource. The backing is FSC certified, FSC A000531.

In production, all energy sources are either green, wind or hydro based and all processes are waterbased. The products do not contain PVC, chlorine, plasticizers, heavy metals or harmful dyes.

Supply and packing

Delivery from stock by the full linear meter or full linear yard. The average piece length of this quality is approx. 50 linear meter or 55 linear yards. However, as is common within the textile industry, it is not possible to establish a standard roll length. The wallcovering is reeled on to a cardboard core, wrapped in polyethylene and protective end caps are fixed. Each roll is then packed in individual cardboard boxes or tubes, which are also made out of FSC certified woodpulp.

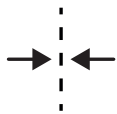
Harmonized System as per the World Customs Organization and Origin

Textile Wallcovering, paper backed: 5905.00. Made in the Netherlands.

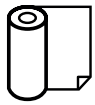


Hanging details

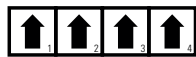
- Hanging** Random, pattern height 1000 cm (394") pattern cannot be matched, non-reverse. Precision trimmed for butt-joining by professional paper hangers. Installation advice supplied with every roll. Use rubber roller instead of spatula. Direction of hanging is printed on back of wallcovering.
- Adhesive** Use a premixed heavy duty, clear vinyl adhesive, suitable for textile wallcovering.
- Variation** There can be a variation between sample material and finished product. Stock cuttings are available for approval.



Precision trimmed



Sold by the meter/yard



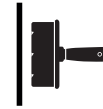
Direction of hanging



Use a rubber roller

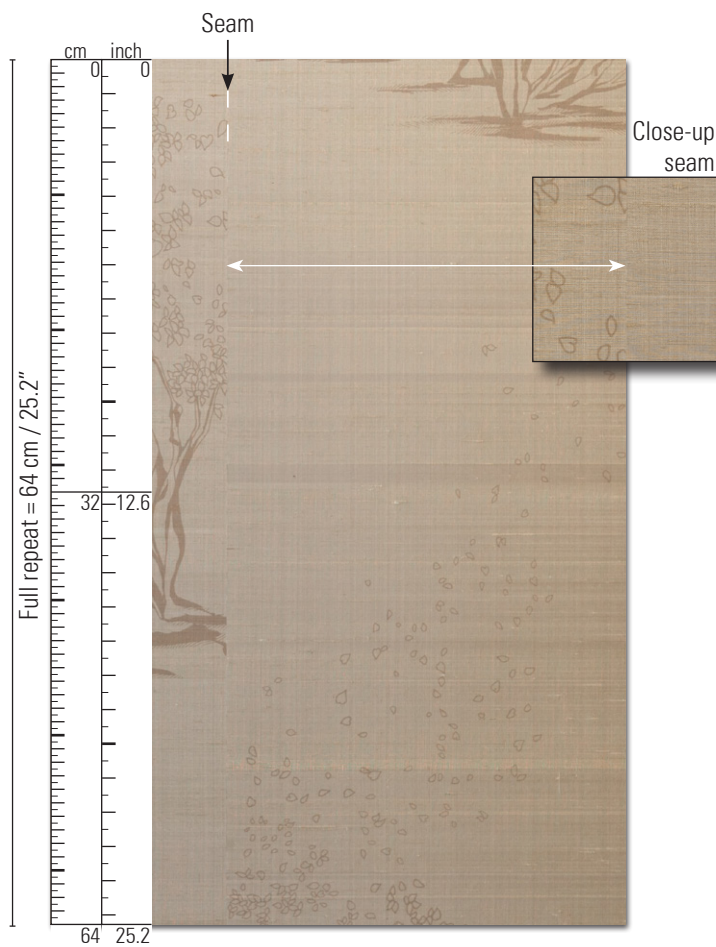


Don't use a spatula



Apply adhesive on the wall

View



"Nature"

Bodhi invites you on an imaginary walk through nature. You hear the wind blowing and see the leaves whirling on the ground. Stimulate your imagination and invite nature and tranquility indoors with Bodhi.



Bodhi 69-2374